

Safety concerns when treating invasive species

**Jeffrey S. Ward
Joseph P. Barsky**

**Department of Forestry and Horticulture
The Connecticut Agricultural Experiment Station**



The Connecticut Agricultural Experiment Station

**Established in 1875
Applied research
Insect & disease identification
Soil testing**





Japanese barberry

Running bamboo

Japanese stiltgrass



How can invasives be controlled?

Short Term – Slow the Spread / Rapid Response
(jump ugly on new infestations)

Limit deer browse intensity

Established infestations

Biological / Cultural

Mechanical

Chemical (herbicide)

Propane torch/prescribed fire





Legal Disclaimer

“Safety...YES” has no affiliations with any of the following:

- ❖ **Rock bands with similar names from England,**
- ❖ **Cable channels devoted to the 27-time World Series Champions New York Yankees,**
- ❖ **Any other YES products which may exist in the marketplace**



So really, what is it?

- ❖ **YOURSELF**- You are #1, are you ready for the work?.
- ❖ **EQUIPMENT**- Is it in proper working order?
- ❖ **SURROUNDINGS**- Where are you working?



YOURSELF



INJURY FACTS*

*Nonfatal occupational injuries and illnesses requiring days away from work, 2009. BLS.

- ❖ 1.2 million nonfatal workplace injuries were reported.
- ❖ How did they get them?
 - ❖ 25% were slips, trips, and falls.
 - ❖ 24% were contact injuries.
 - ❖ 22% were overexertion.



YOURSELF

Equipment Surroundings

**It is important to
KNOW YOUR LIMITS**

Things you can do:

- ❖ Warm up beforehand
- ❖ Stay hydrated
- ❖ Stretch out
- ❖ Take rest breaks



EQUIPMENT



Yourself

EQUIPMENT

Surroundings

- ❖ **Personal Protective Equipment**
- ❖ **Condition of Equipment**
- ❖ **Familiarity with Equipment**
- ❖ **First aid kit available? Cell phone to call 911?**



SURROUNDINGS

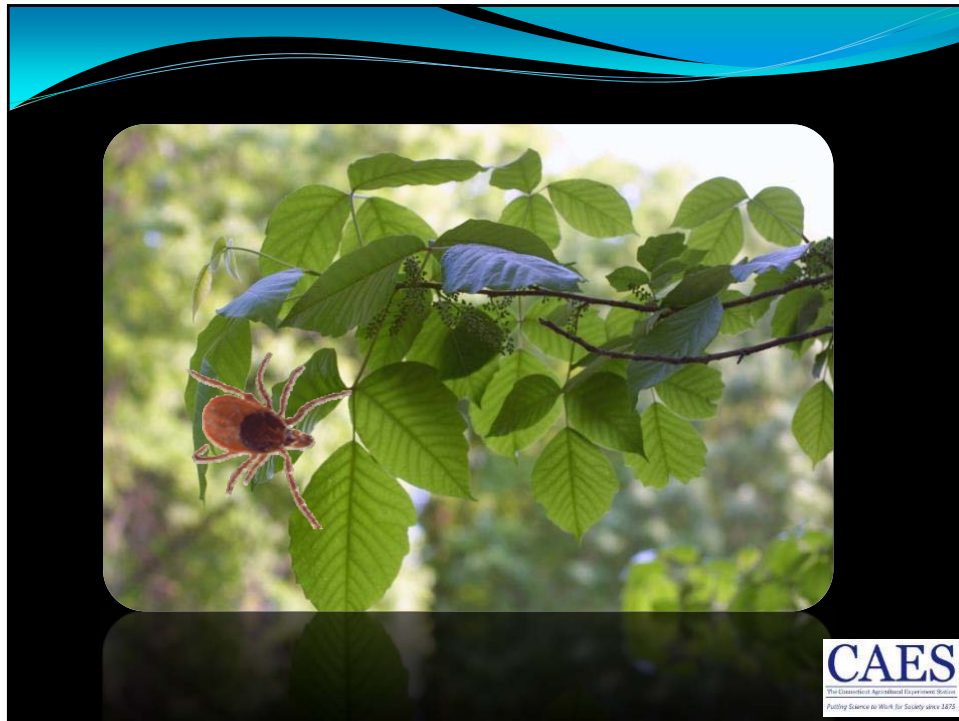


Yourself Equipment

SURROUNDINGS

- ❖ **Where are other team members, general public?**
- ❖ **Where are trip, fall, cut hazards?**
- ❖ **Lets not forget about the soil, the slope, the heat, humidity, the cold, the wet, and the wind.**
- ❖ **ALL THESE INFLUENCE THE WAY WE AND OUR EQUIPMENT PERFORM.**





Control Techniques

Biological control

Cultural

Mechanical

Chemical (herbicide)

Propane torch / prescribed fire

Limit deer browse intensity



Control Techniques

Biological control
Cultural

Mechanical

Chemical (herbicide)

Propane torch / prescribed fire

Limit deer browse intensity



Personal protective equipment

Hand tools

- Gloves and eye protection

Brush saw

- Boots and gloves
- Pants and L/S shirt (pieces get thrown)
- Safety glasses, hearing protection

Chain saw

- That's a whole other lecture



All – first-aid kit to stop bleeding



Equipment/Surroundings

Did *YOU* ?

- Check equipment for proper working order
- Check area for unstable surfaces (i.e., slick muddy slope)
- Discuss maintaining a safe distance between folks using power equipment (again, chainsaws are a whole other lecture)



Control Techniques

Biological control

Cultural

Mechanical

Chemical (herbicide)

Propane torch / prescribed fire

Limit deer browse intensity



Personal protective equipment

The LABEL is the law!!

- Pants and long-sleeve shirt
- Boots [gloves, safety glasses]
- Whatever else required by label

Pesticide Applicator Operational Certificate

- Not legally required for non-commercial applications of many herbicides, but a good idea



Equipment/Surroundings

Did *YOU* ?

- Check equipment for proper working order
- Bring proper supplies for mixing
- Bring a spill kit (accidents do happen)
- Plan how to avoid non-target species and applications to wetlands
- Discuss maintaining a safe distance between applicators and for post-treatment posting
- Plan how to safely store unused solutions and how to clean equipment



Control Techniques



Biological control

Cultural

Mechanical

Chemical (herbicide)

Propane torch / prescribed fire

Limit deer browse intensity



Personal protective equipment

Are *YOU* wearing the proper gear?

- Leather boots and gloves
- Non-flammable canvas/cotton pants and long-sleeve shirt
- Safety glasses
- Hearing protection



First-aid kit for burns & bleeding



Equipment

Propane torch

Business end: 1,800°F

Propane tank: -40°F

Connections and hose

Cracked or leaky?

Rubber is a natural product and will degrade.

Can you smell ethyl mercaptan?

Is it safe? Regularly check your gear them to make sure it is ready for work!



Equipment/Surroundings

Did *YOU* ?

- Check equipment for leaks and proper working order
- Bring fire suppression equipment
- Make sure conditions won't start a wildfire
- Continue to monitor conditions for wildfire



Y-E-S

- ❖ YOURSELF- You are #1.
- ❖ EQUIPMENT- Is it in proper working order?
- ❖ SURROUNDINGS- Where are you working?



