

CONNECTICUT INVASIVE PLANT WORKING GROUP
2018 Symposium

Session 4

ADVANCED INVASIVE
PLANT MANAGEMENT

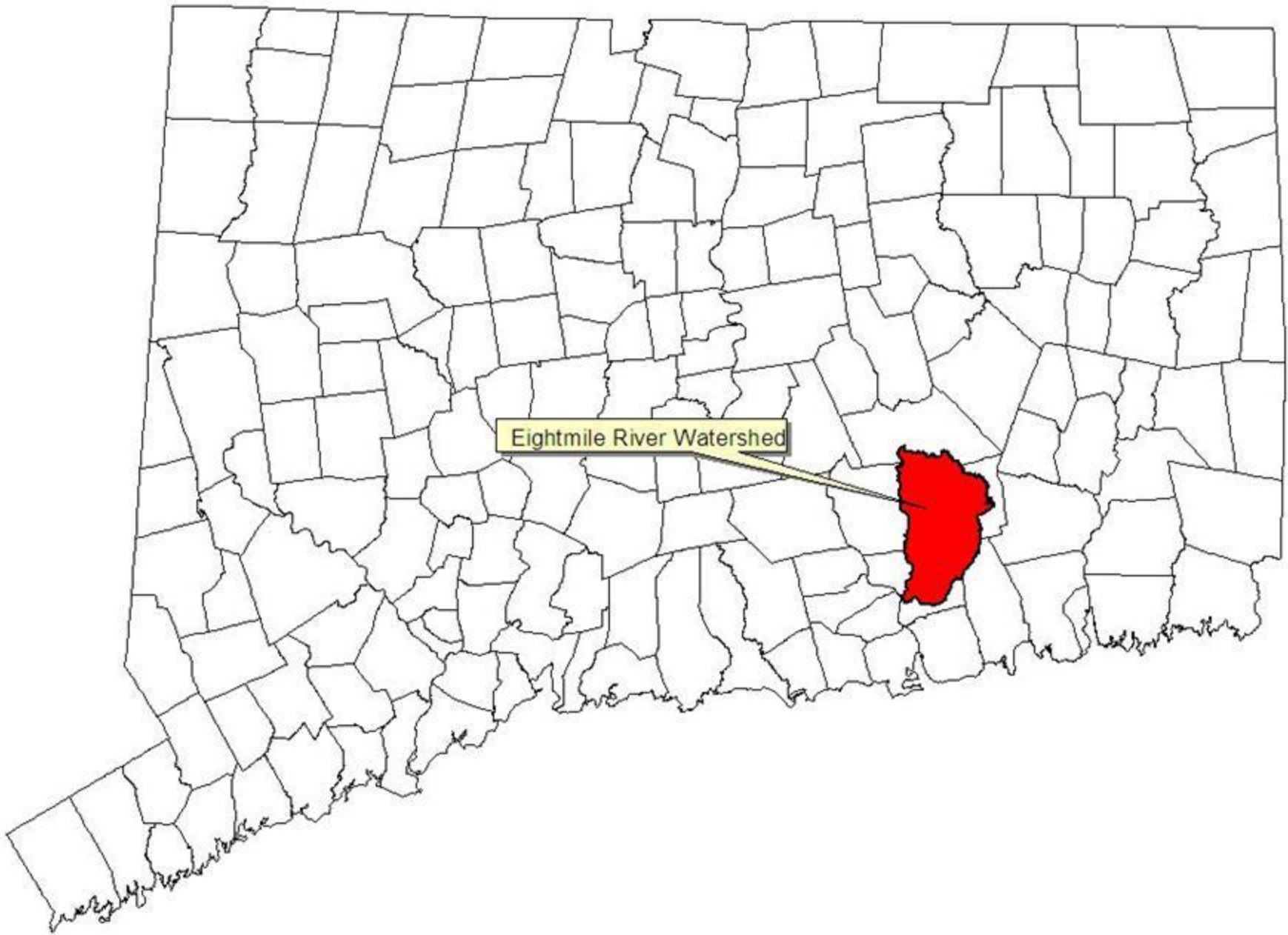
- Stiltgrass (herbaceous)
- Barberry (woody)
- Knotweed (wetland)

David Gumbart
The Nature Conservancy

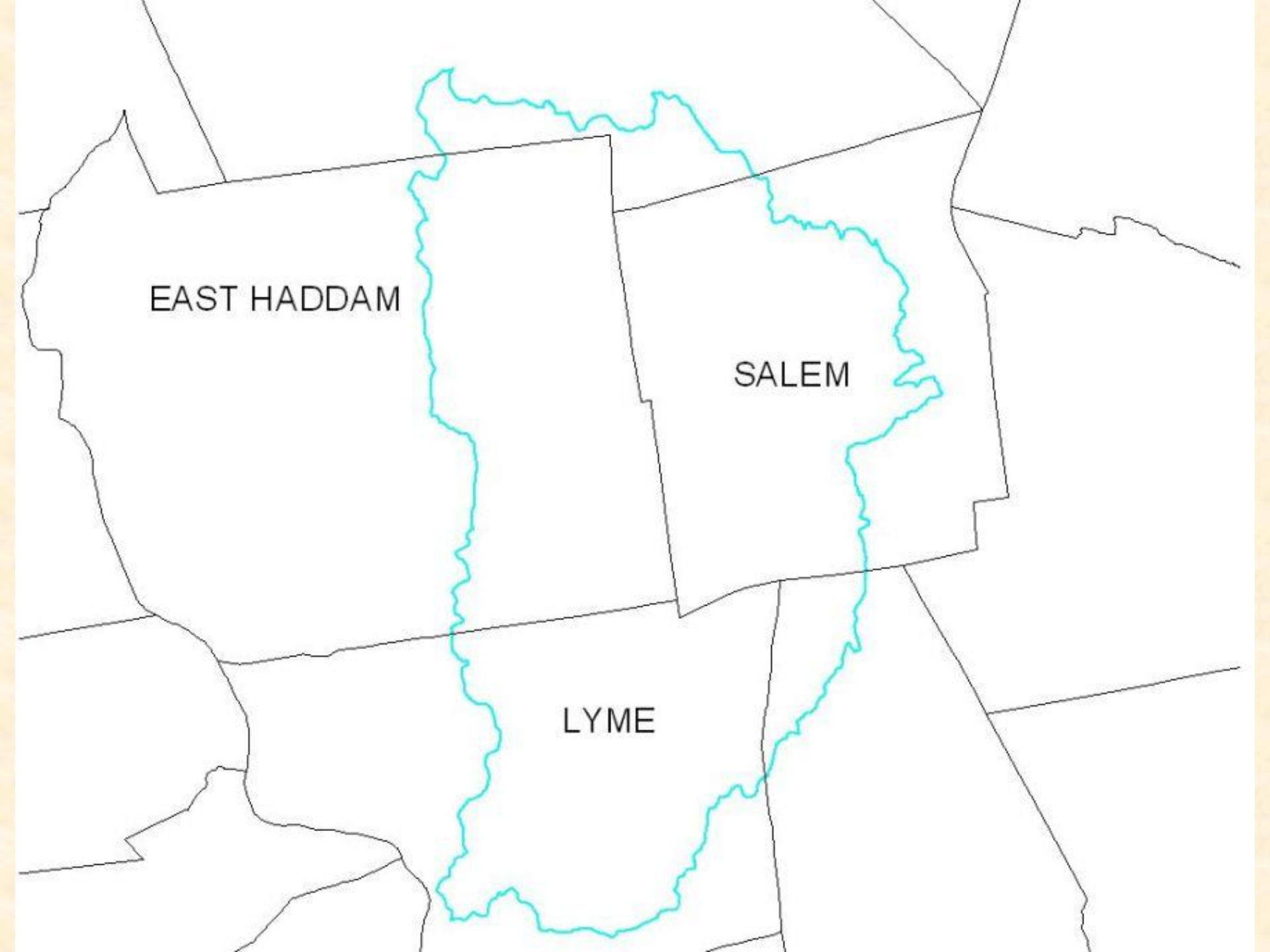
Chris Polatin
Polatin Ecological Services

Control of Japanese Stiltgrass
(Microstegium vimineum)
in the Eightmile River Watershed;

Results and Recommendations Following
Eight Years of Control
2011 - 2018



Eightmile River Watershed

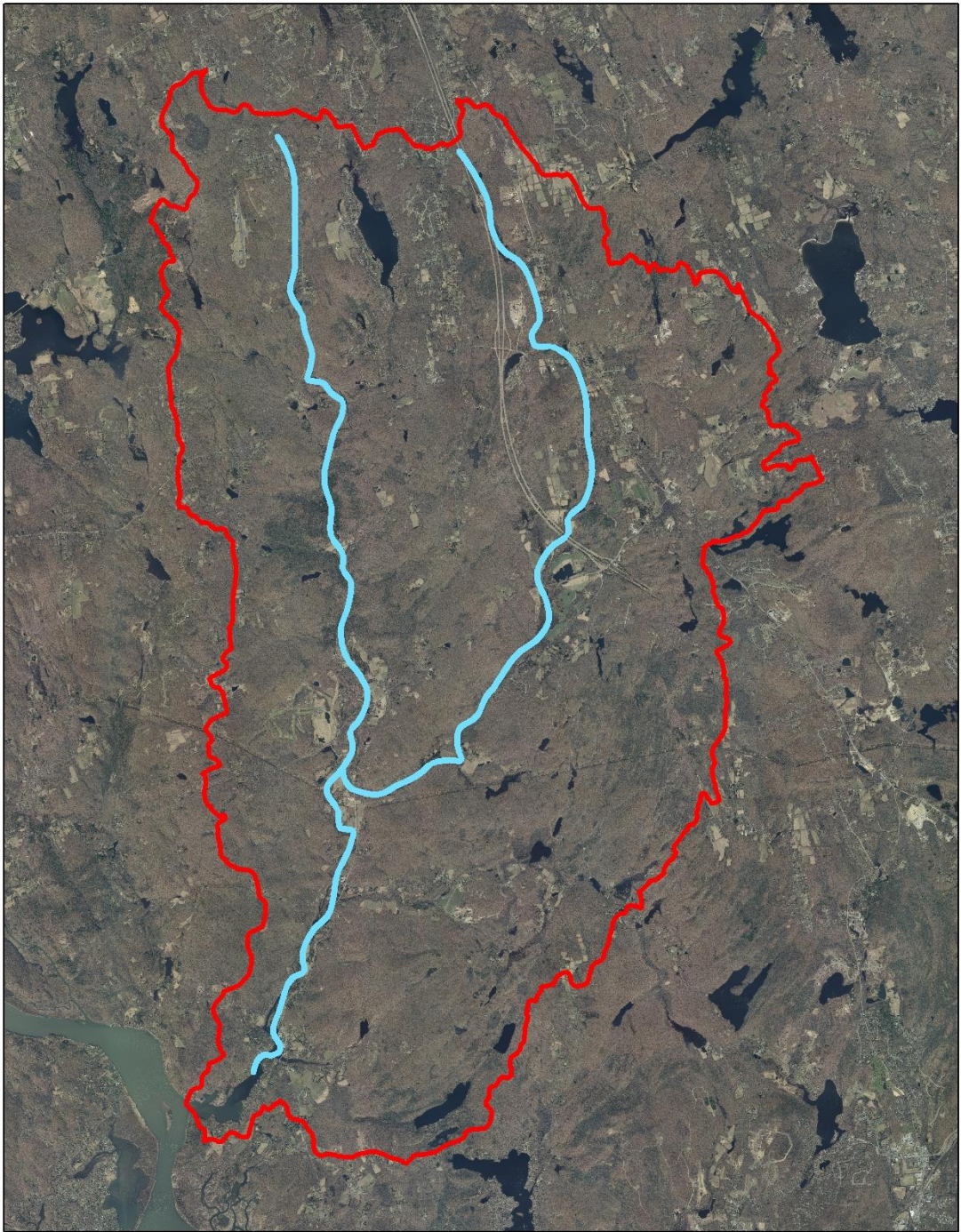


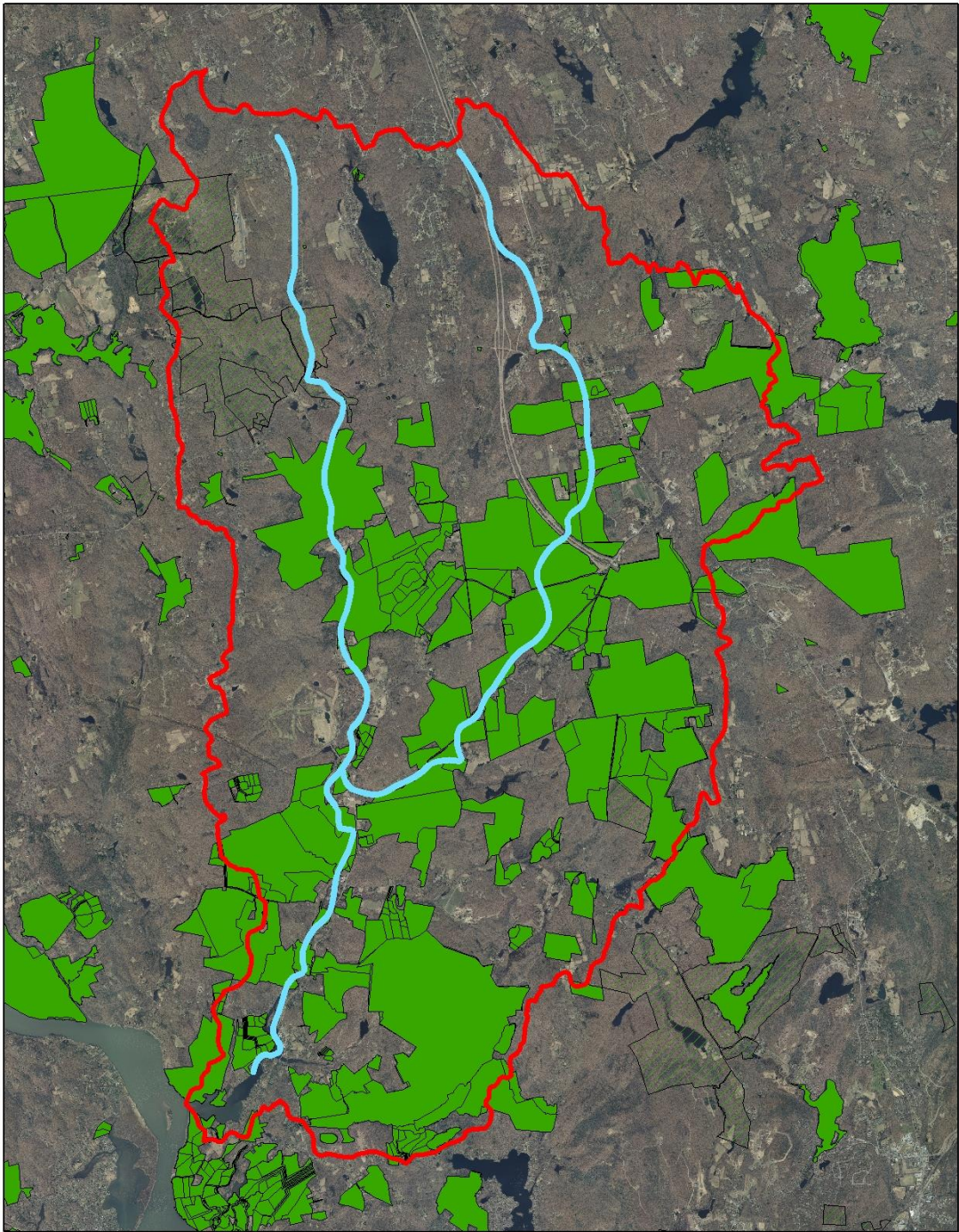
A map showing the boundaries of three municipalities: East Haddam, Salem, and Lyme. A cyan line traces a path through the municipalities, starting in the north, moving south through East Haddam, then south through Salem, and finally south through Lyme. The boundaries are shown as black lines, and the municipalities are labeled with their names in black text.

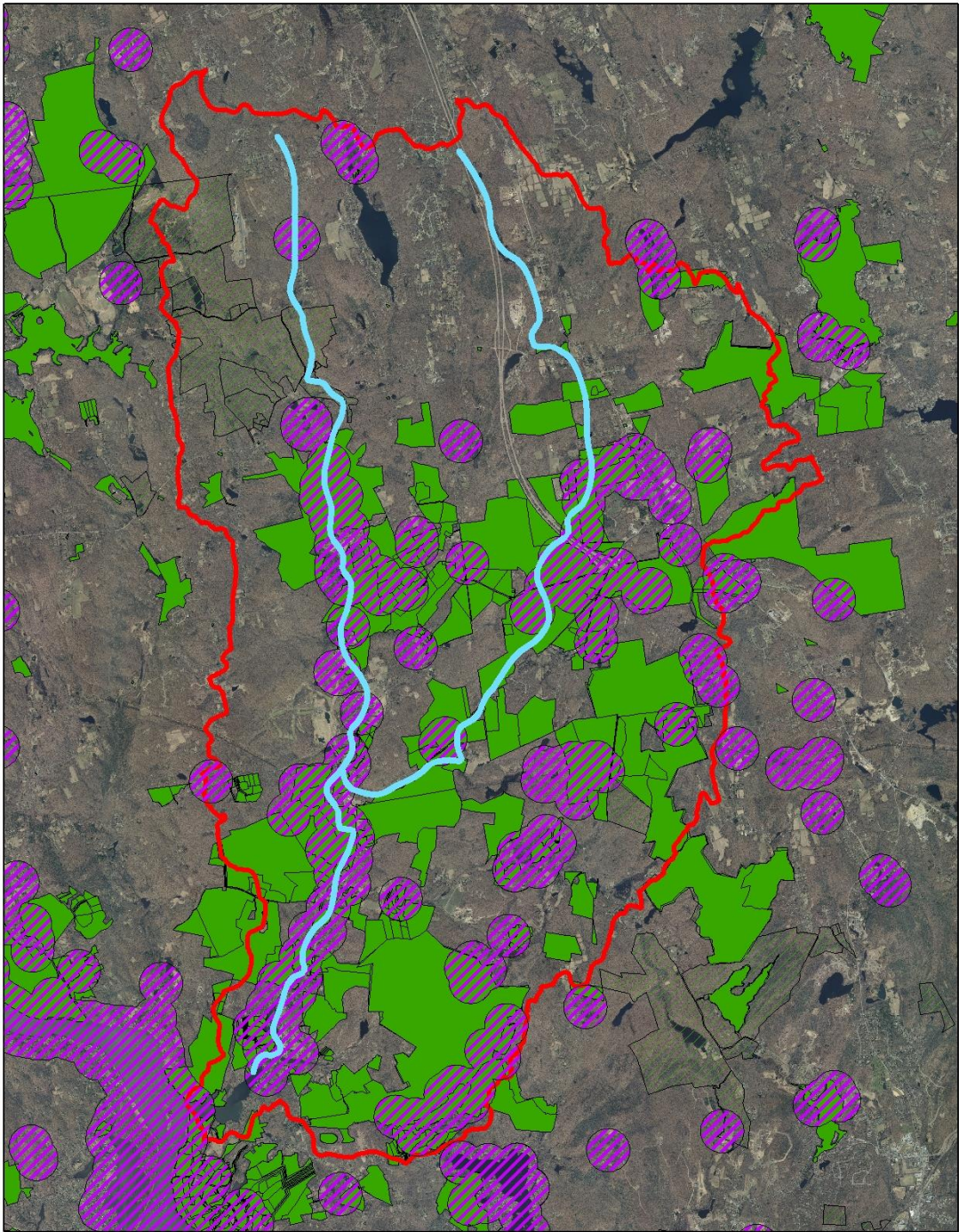
EAST HADDAM

SALEM

LYME



















INVASIVE PLANT MANAGEMENT

IPMDAT 

DECISION ANALYSIS TOOL

<https://ipmdat.org/>

To justify spending resources on an invasive plant control project:

The invasive species must cause serious environmental or economic harm or harm to human health.

The project should be feasible.

The project should give a good return on the investment of resources.

The IPMDAT contains three potential control strategies: eradication, containment, and suppression:

Eradication – goal is to eliminate all individuals and the seed bank from an area with the low likelihood of needing to address the species again for the next 10 years.

Containment – a project which aims to prevent infestations of invasive species from spreading to uninfested areas.

Suppression – goal of project is to reduce an invasive plant population in size, abundance, and/or reproductive output below the threshold needed to maintain a species or ecological process.

The completion of the IPMDAT results in one of four possible outcomes.

Proceed with control (project has value and a high probability of success).

Stop – secure sustainable funding before proceeding.

Stop – control not feasible and/or not warranted.

Peer-review required – feasibility and/or return on investment are uncertain.

To justify spending resources on an invasive plant control project:

- The invasive species must cause serious environmental or economic harm or harm to human health.
- The project should be feasible.
- The project should give a good return on the investment of resources.

The IPMDAT contains three potential control strategies: eradication, containment, and suppression:

Eradication – goal is to eliminate all individuals and the seed bank from an area with the low likelihood of needing to address the species again for the next 10 years.

Containment – a project which aims to prevent infestations of invasive species from spreading to uninfested areas.

Suppression – goal of project is to reduce an invasive plant population in size, abundance, and/or reproductive output below the threshold needed to maintain a species or ecological process.

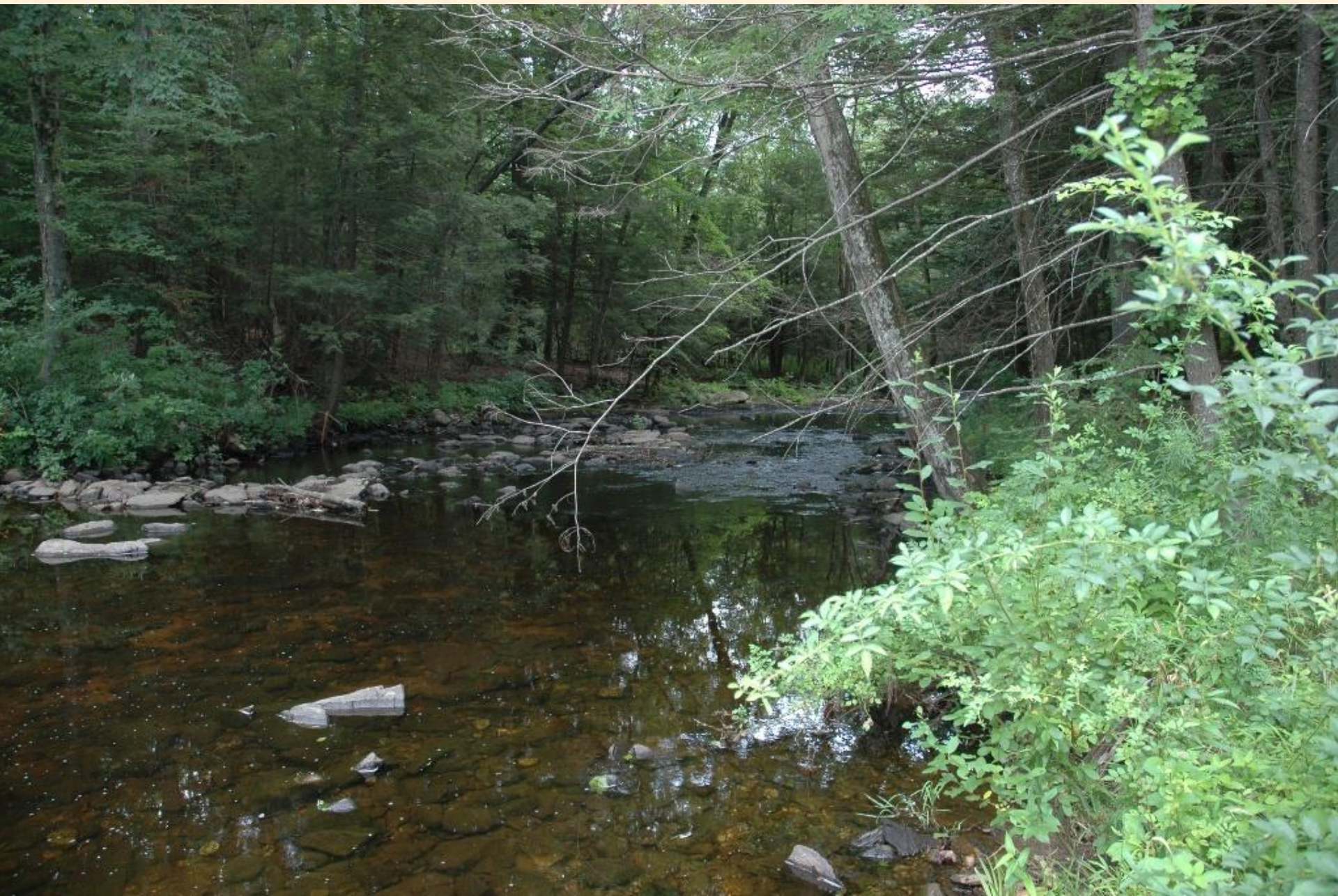
The completion of the IPMDAT results in one of four possible outcomes.

1) Proceed with control (project has value and a high probability of success).

2) Stop – secure sustainable funding before proceeding.

3) Stop – control not feasible and/or not warranted.

4) Peer-review required – feasibility and/or return on investment are uncertain.









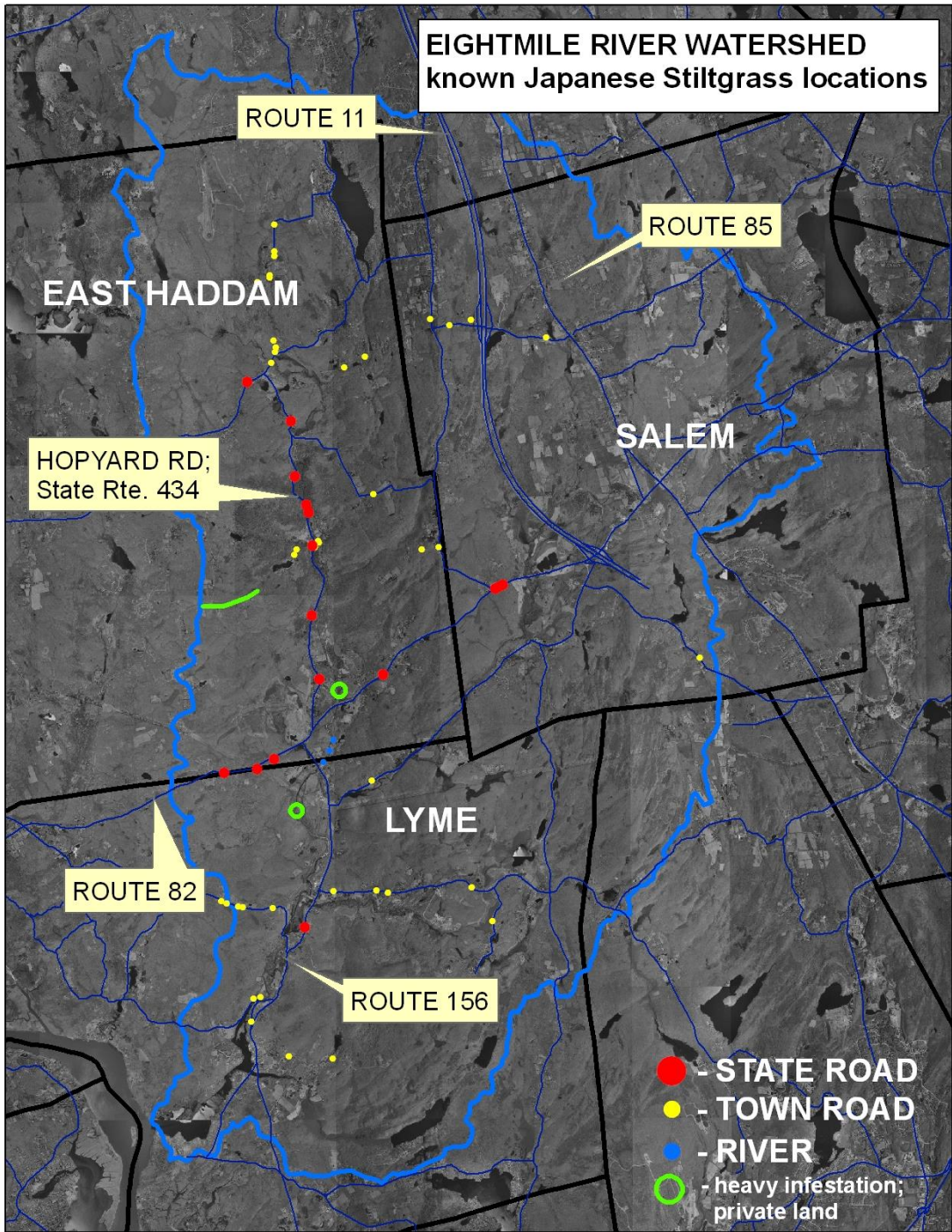






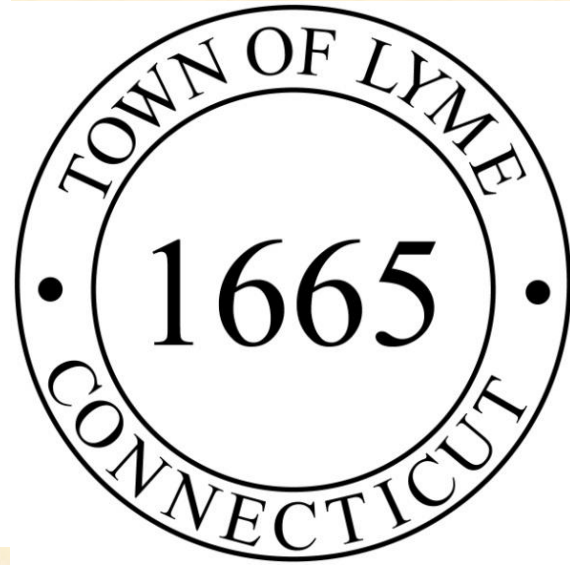


EIGHTMILE RIVER WATERSHED
known Japanese Stiltgrass locations





Hi-Neighbor!









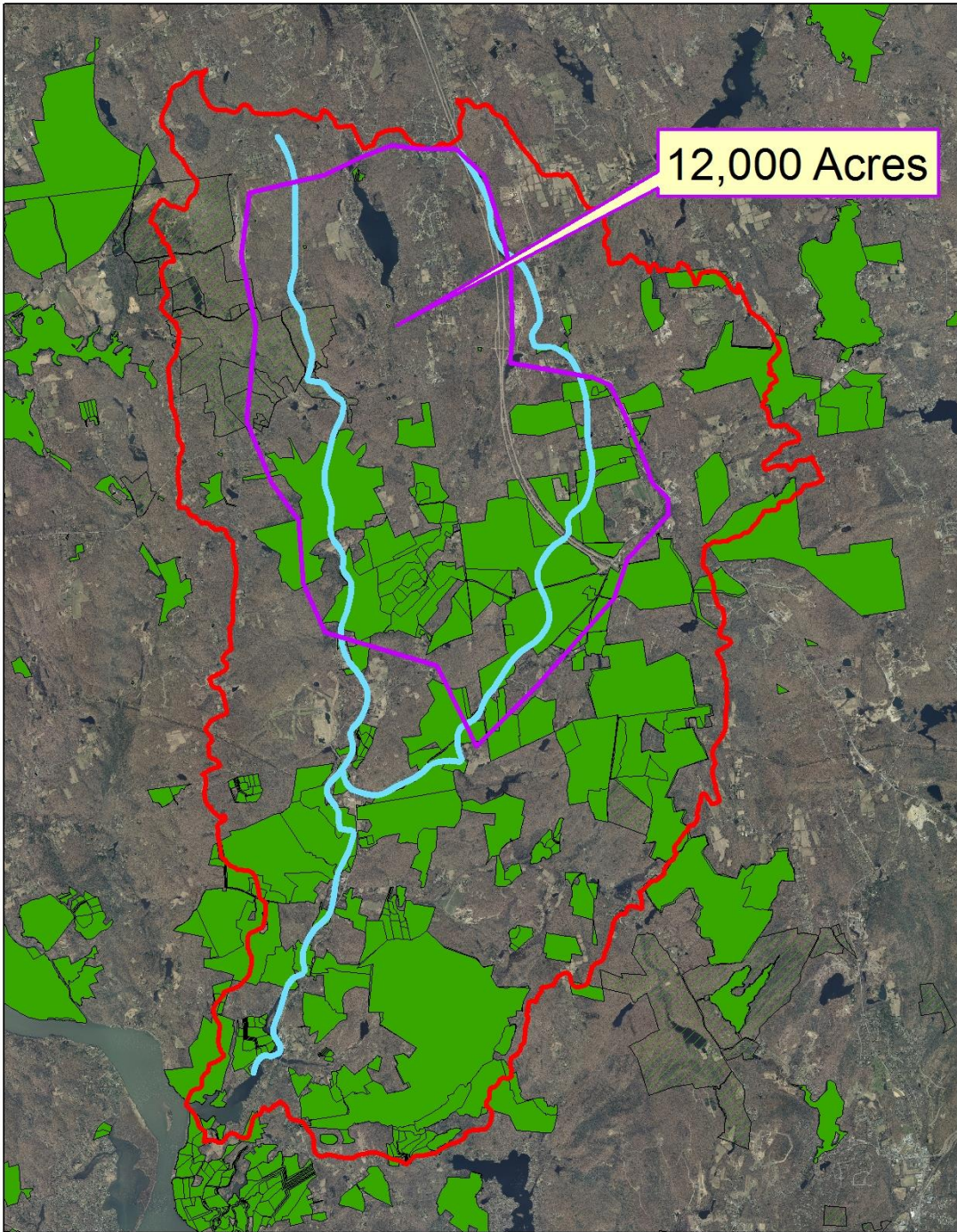












12,000 Acres





← Bottle Gentian

Nodding Lady's
Tresses →



← Swamp
Lousewort
(state rare)







Pale Green
Orchid;

*Platanthera
flava*

(state rare,
special
concern)





























Japanese Barberry



Barberry Control Project Data Sheet Jewett & Eno Preserves, Mt. Archer Road, Lyme, CT

Preserve: Jewett X Eno _____ Date: 09-18-09

Monitors Present: David Gumbart, Linda Bireley (transect S 74 E)

Plot line location: (circle) Burn/north Burn/south **Herbicide/north** Herbicide/south Control Native

| | 5m | 10m | 15m | 20m | 25m | 30m | 35m | 40m | 45m | 50m |
|----------------------------|----|-----|-----|-----|-----|-----|-----|-----|-----|-----|
| Barberry | 0 | 0 | 20 | 50 | 50 | 80 | 100 | 50 | 50 | 30 |
| Euonymous | 25 | 50 | 5 | 20 | 20 | 20 | 3 | 5 | 5 | 3 |
| Bittersweet | | | 1 | | 2 | 10 | | | | |
| Greenbriar | 2 | 2 | | | | | | | | |
| Hay-scented Fern | | | | | | | | | 2 | |
| Jack in the Pulpit | 1 | | | | | | | 1 | 1 | 1 |
| Spicebush | | 1 | | 3 | | 3 | | | | 1 |
| Canada Mayflower | | 2 | 3 | | 1 | | | | | 5 |
| Virginia Creeper | | 1 | 1 | | 1 | | | | | 1 |
| Christmas Fern | | 3 | | | | | | | | |
| New York Fern | | | | | | | | | | |
| Red Maple | | 1 | | | | | | | | 1 |
| Tulip Poplar | | 2 | | | | | | | | |
| <i>Carex pennsylvanica</i> | | 5 | 2 | | | | | | | |
| Poison Ivy | | | | | | | | | | |
| Round-leaved Pyrola | | | | | | | | | | |
| Sugar Maple | | | | | | | | | | |
| Black Cherry | | 1 | 3 | | | | | | | |
| Multiflora Rose | | | | | | | | | | |
| Striped Wintergreen | | | | | | | | | | |
| Sweet Pepperbush | | | | | | | | | | |
| <i>Aralia nudicaulis</i> | | | | | | | | | | |
| unknown | | | | | | | | | | |
| Other (use key below) | | p-1 | k-3 | | n-3 | | | | | |

other plants: a) hickory; b) oak; c) Sensitive Fern; d) Common Dewberry; e) Indian Pipes; f) *Carex sp.*; g) Honeysuckle vine; h) moss; i) lichen; j) Black Birch; k) White Wood Aster; l) Garlic Mustard; m) Tree of Heaven; n) Green Ash; o) Partridgeberry; p) *Viburnum sp.*

















April 2016, beginning of 6th growing season following initial cutting in fall 2009







Burn, Baby, Burn!!

2A



1

Lots of barberry here



**Spray the shit
out of it**

2B



3—celebrate success



courtesy of www.tizian-tizianovecelio.org