

Hydrilla verticillata

Common name:

Hydrilla

Origin:

Asia

Key features:

Plants are submersed

Stems: Slender, branched and up to 25 feet (7.5 m) long

Leaves: Whorled leaves approx. 0.7 inches (1.5 cm) long, whorls often have 5 leaves (range 4-8); leaf margins are visibly toothed

Flowers: Female flowers have three translucent petals that have reddish streaks, male flowers have three petals and can be white to red in color

Fruits/Seeds: Small tubers (key feature) can be found in the sediment, turions form along the stem

Reproduction: Fragmentation, turions, tubers and seeds



Photo by CAES IAPP



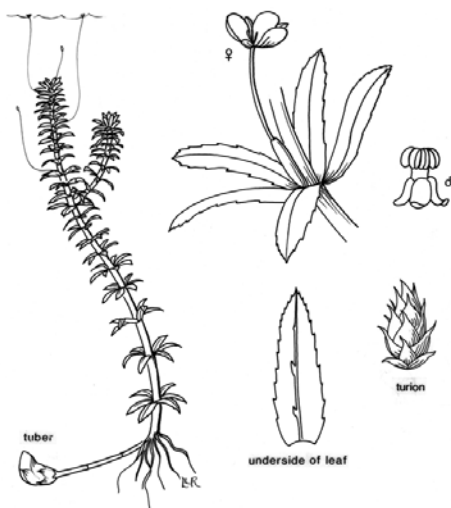
Five leaves per whorl

Photo by CAES IAPP

Easily confused species:

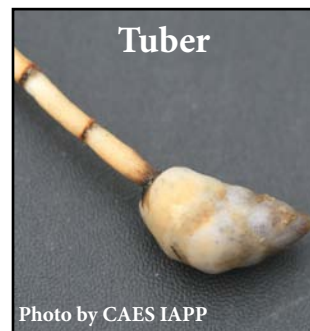
Waterweeds (Native): *Elodea nuttallii* and *Elodea canadensis*

Brazilian waterweed: *Egeria densa*



Copyright 1991 Univ. of Florida
Center for Aquatic and Invasive Plants

Hydrilla verticillata
Hydrilla



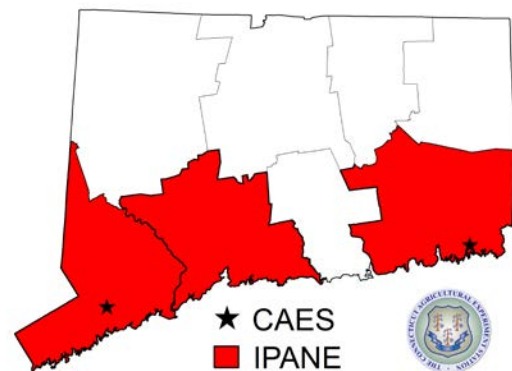
Tuber

Photo by CAES IAPP



Turions

Photo by CAES IAPP



★ CAES
■ IPANE

